

Innovative Cationic “Complexes”

Simple and Smart Solutions for Hair and Skin Conditioning

Features:

- Tertiary amines and tertiary amine quats complexed with long chain fatty acids
- Polyurethane amines and polyurethane amine salts
- Derived from natural feedstocks
- Outstanding emolliency and lubricity
- Enhanced sheen and luster
- Rinse off and leave-on products
- Effective at low use levels
- REACh compliant



Product	INCI Name	Appearance	Description
Necon LO	Dimethyl Lauramine Oleate	clear viscous amber liquid	superior slip agent which provides long-lasting emolliency and moisturization; adds sheen and luster and helps soften the hair shaft
Necon LO-80	Linoleamidopropyl Dimethyl Amine Dimer Dilinoleate	clear viscous amber liquid	extremely substantive; forms a thin silky layer on skin; imparts long-lasting emolliency; provides conditioning for hair color bases
Nequat DBS	Stearyl Alcohol (and) Stearamidopropyl Ethyldimonium Ethosulfate (and) Dimethyl Lauramine (and) Dilinoleic Acid	waxy solid	waxy cationic emulsifier resulting in creamy luxurious emulsions; reduces combing force in wet hair; leaves silky velvety feel; effective for treatment of damaged and bleached hair
Parapel HC/ Foamquat CHP	Linoleamidopropyl Ethyldimonium Ethosulfate (and) Dimethyl Lauramine Isostearate	clear viscous liquid	water soluble conditioner for leave-on and rinse-off products; cationic emulsifier, excellent wet comb, anti-static properties, leaves silky texture
Polyderm PPI-SA-LL	Bis-Lauryl Lactate IPDI/PEG-2 Soyamine Copolymer	clear dark viscous liquid	amber polyurethane emollient and conditioner; softening agent with unique slip properties
PolyNecon PPI-SA-15D	IPDI/PEG-15 Soyamine Copolymer Dimer Dilinoleate	clear viscous liquid	water soluble polymer and alternative to silicone; substantive to hair without buildup; superior deposition for surfactant systems

Innovative Cationic "Complexes"

Formulary

Conditioning Shampoo AO-48

Material	INCI	W/W%
Water	Water	44.55
Necon LO-80	Linoleamidopropyl Dimethylamine Dimer Dilinoleate	0.50
Foamquat IAES	Isostearamidopropyl Ethyl Dimonium Ethosulfate	0.50
Foamtaine CAB-G	Cocamidopropyl Betaine	15.00
BioTerge AS-40	C14-16 Olefin Sulfonate	10.00
Foamox CDO	Coamidopropylamine Oxide	3.00
Steol CS-330	Sodium Laureth-3 Sulfate	6.00
Stepanol WA (paste)	Sodium Lauryl Sulfate	20.00
Fragrance		0.25
Microcare MTI	Methylisothiazolinone (and) Iodopropynyl Butylcarbamate	0.20
		100.00

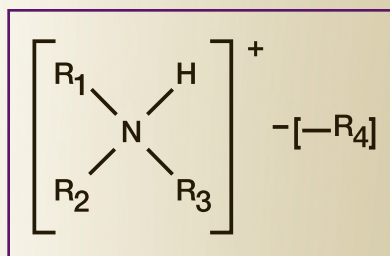
PolyNecon and Body Wash PSI-274

Material	INCI	W/W%
Water	Water	44.55
Plantaren 1300	Lauryl Glucoside	5.00
Mackam CBS-50G	Cocamidopropyl Hydroxysultaine	7.00
Foamtaine CAB	Cocamidopropyl Betaine	10.00
Steol CA-230	Ammonium Laureth Sulfate	19.00
Dermothix-75	Disteareth 75/IPDI	1.00
PolyNecon SA-15D	PEG-15 Soyamine/IPDI Copolymer Dimer Dilinoleate	1.00
PolyNecon SA-D	Di-PEG-2 Soyamine/IPDI Copolymer (proposed)	1.00
Fragrance		1.00
Microcare MTI	Methylisothiazolinone (and) Iodopropynyl Butylcarbamate	0.20
		100.00

Multiple Applications

- | | | |
|----------------|----------------|----------------|
| ■ Shampoos | ■ Conditioners | ■ Styling aids |
| ■ Body washes | ■ Shave preps | ■ Bar soaps |
| ■ Liquid Soaps | ■ Aerosols | ■ Dish Liquids |
| ■ Cleansers | ■ Moisturizers | ■ Bath gels |

Amine Salt/Fatty Acid Complex Structure



Mint Shaving Butter PSI-0175

Material	INCI	W/W%
RO Water	Water	47.69
Mackam 160C-30	Sodium Lauriminodipropionate	10.00
Mackam 50-SB	Cocamidopropyl Hydroxysultaine	5.00
Foamtaine CAB	Cocamidopropyl Betaine	5.00
Plantaren 1300	Lauryl Glucoside	5.00
Dermothix 75	Di-Steareth 75/IPDI	2.00
Tauranol I-78	Sodium Cocoyl Isethionate	20.00
Menthol	Menthol	0.50
Dermocool	Menthyl Lactate	2.00
Polyderm PPI-SA-LL	Bis-Lauryl Lactate IPDI/PEG-2 Soyamine Copolymer	0.50
Dermolan GLH	Glycereth-8 Hydroxystearate	0.50
Dermol GDL	Glyceryl Dilaurate	0.50
Polyderm PPI-SA-15D	IPDI/PEG-15 Soyamine Dimer Dilinoleate	0.25
Fragrance	Carrubba Mint D5411	1.00
Kathon CG	Methylchloroisothiazolinone (and) Methylisothiazolinone	0.06
		100.00

Nequat DBS Conditioner SPA1-03*

Material	INCI	W/W%
RO Water	Water	88.55
Nequat DBS	Stearyl Alcohol (and) Stearamidopropyl Ethyldimonium Ethosulfate (and) Dimethyl Lauramine (and) Dilinoleic Acid	5.75
Cetyl Alcohol	Cetyl Alcohol	3.00
DC 200 Fluid	Cyclopentasiloxane	1.00
PolyNecon PPI-SA-15D	PEG-15 Soyamine/IPDI Copolymer Dimer Dilinoleate	1.00
Fragrance		.50
Microcare MTI	Methylisothiazolinone (and) Iodopropynyl Butylcarbamate	0.20
		100.00

Typical Properties

Product	pH, 5%	Acid/Alkaline Values
Necon LO	7.0	125/100
Necon LO-80	7.0	100/70
Nequat DBS	6.0	25/25
Parapel HC/ Foamquat CHP	5.0	50/40
Polyderm PPI SA-LL	4.3	3/63
PolyNecon PPI - SA-15D	6.75	42/42

ALZO International Inc.

Where Chemistry is Artistry